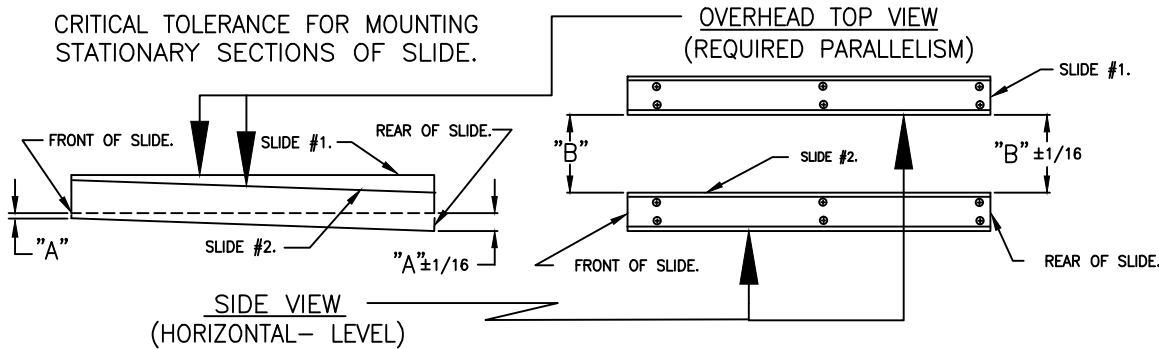


DIMENSION "B" (SPAN BETWEEN TWO SLIDES) SHOULD BE LESS THAN LENGTH OF THE SLIDE.

CRITICAL TOLERANCE FOR MOUNTING STATIONARY SECTIONS OF SLIDE.



Important Installation Note!!
 Slides Must Be Parallel To Each Other To Function/Lock Correctly. Mount Slides Loosely, Assemble Drawer/Chassis To Slides And Cycle Assembly Before Tightening To Ensure Parallelism.

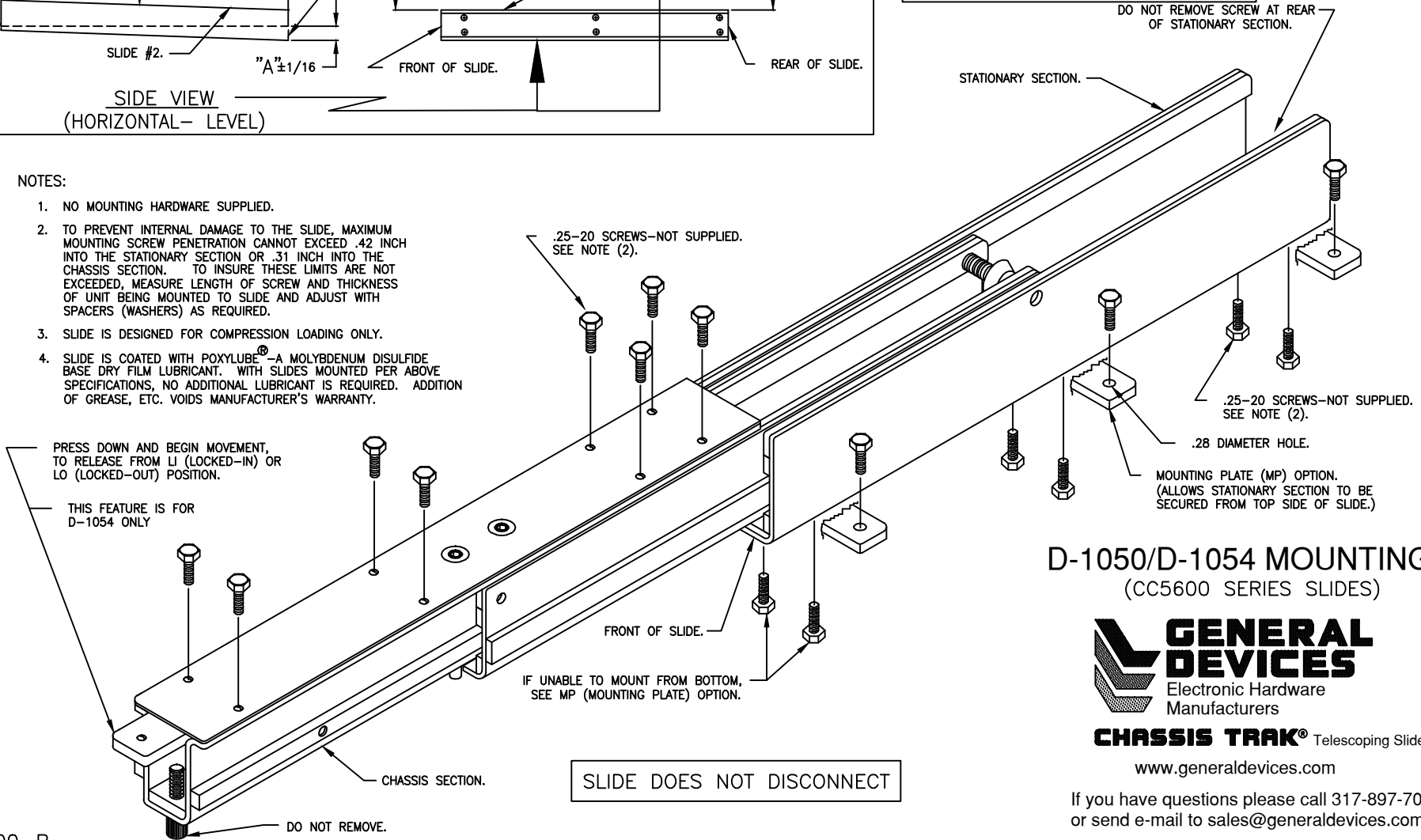
DO NOT REMOVE SCREW AT REAR OF STATIONARY SECTION.

NOTES:

1. NO MOUNTING HARDWARE SUPPLIED.
2. TO PREVENT INTERNAL DAMAGE TO THE SLIDE, MAXIMUM MOUNTING SCREW PENETRATION CANNOT EXCEED .42 INCH INTO THE STATIONARY SECTION OR .31 INCH INTO THE CHASSIS SECTION. TO INSURE THESE LIMITS ARE NOT EXCEEDED, MEASURE LENGTH OF SCREW AND THICKNESS OF UNIT BEING MOUNTED TO SLIDE AND ADJUST WITH SPACERS (WASHERS) AS REQUIRED.
3. SLIDE IS DESIGNED FOR COMPRESSION LOADING ONLY.
4. SLIDE IS COATED WITH POXYLUBE[®]—A MOLYBDENUM DISULFIDE BASE DRY FILM LUBRICANT. WITH SLIDES MOUNTED PER ABOVE SPECIFICATIONS, NO ADDITIONAL LUBRICANT IS REQUIRED. ADDITION OF GREASE, ETC. VOIDS MANUFACTURER'S WARRANTY.

PRESS DOWN AND BEGIN MOVEMENT, TO RELEASE FROM LI (LOCKED-IN) OR LO (LOCKED-OUT) POSITION.

THIS FEATURE IS FOR D-1054 ONLY



SLIDE DOES NOT DISCONNECT

D-1050/D-1054 MOUNTING
 (CC5600 SERIES SLIDES)



CHASSIS TRAK[®] Telescoping Slides

www.generaldevices.com

If you have questions please call 317-897-7000 or send e-mail to sales@generaldevices.com